

Sardinia Symposium 2003

# **Closure and Aftercare Regime for Landfills below the Water Table**

*Part 1: Introduction to the „Halle-Lochau“ landfill*

*Part 2: Problems of landfills below the water table*

*Part 3: Research and development project*

**Martina Rapphel, Abfallwirtschaft GmbH Halle-Lochau, Germany**



# **Abfallwirtschaft GmbH Halle-Lochau**

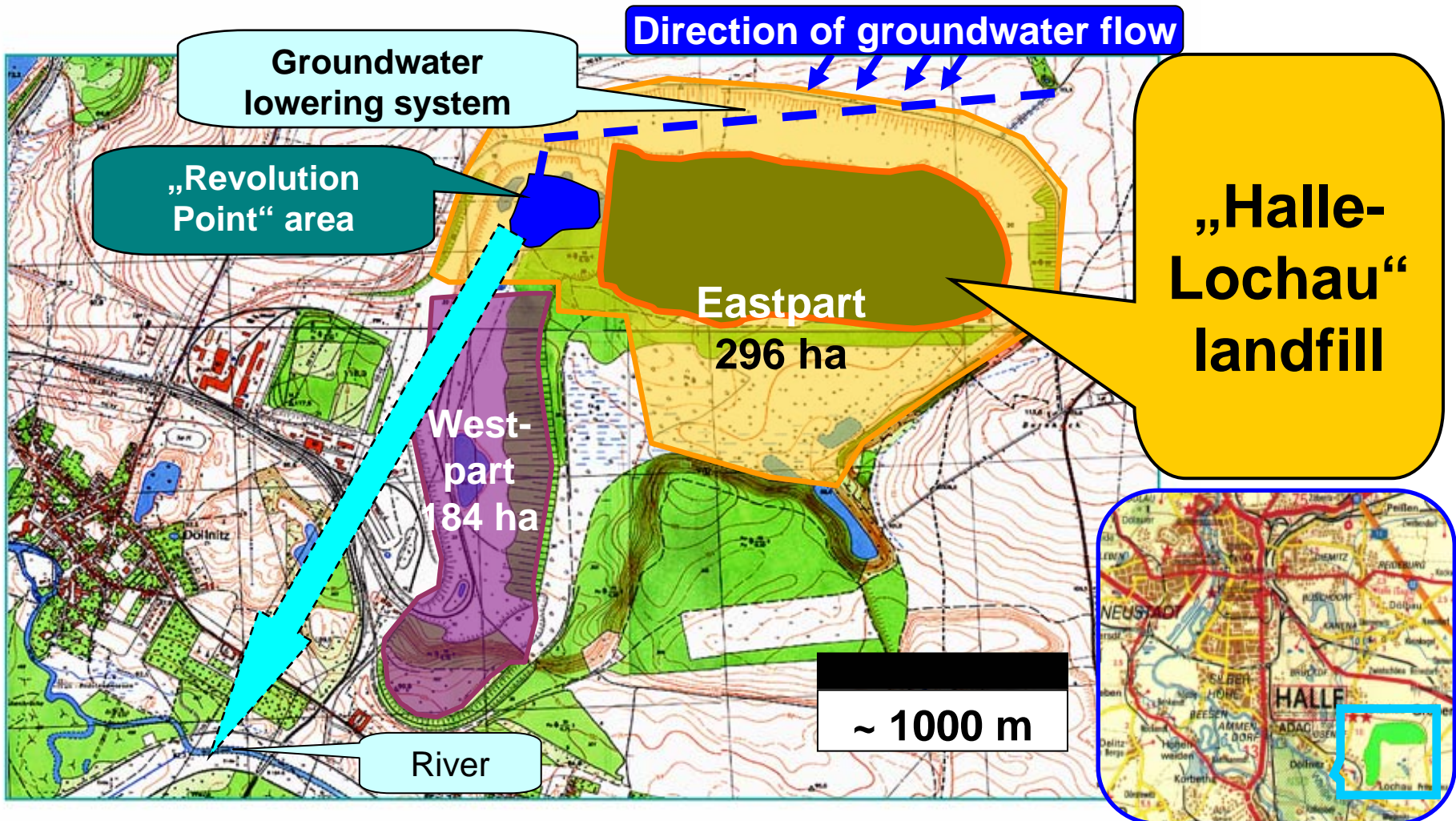
## **Closure and Aftercare Regime for Landfills below the Water Table**

### **Part 1:**

### **Introduction to the "Halle-Lochau" landfill**



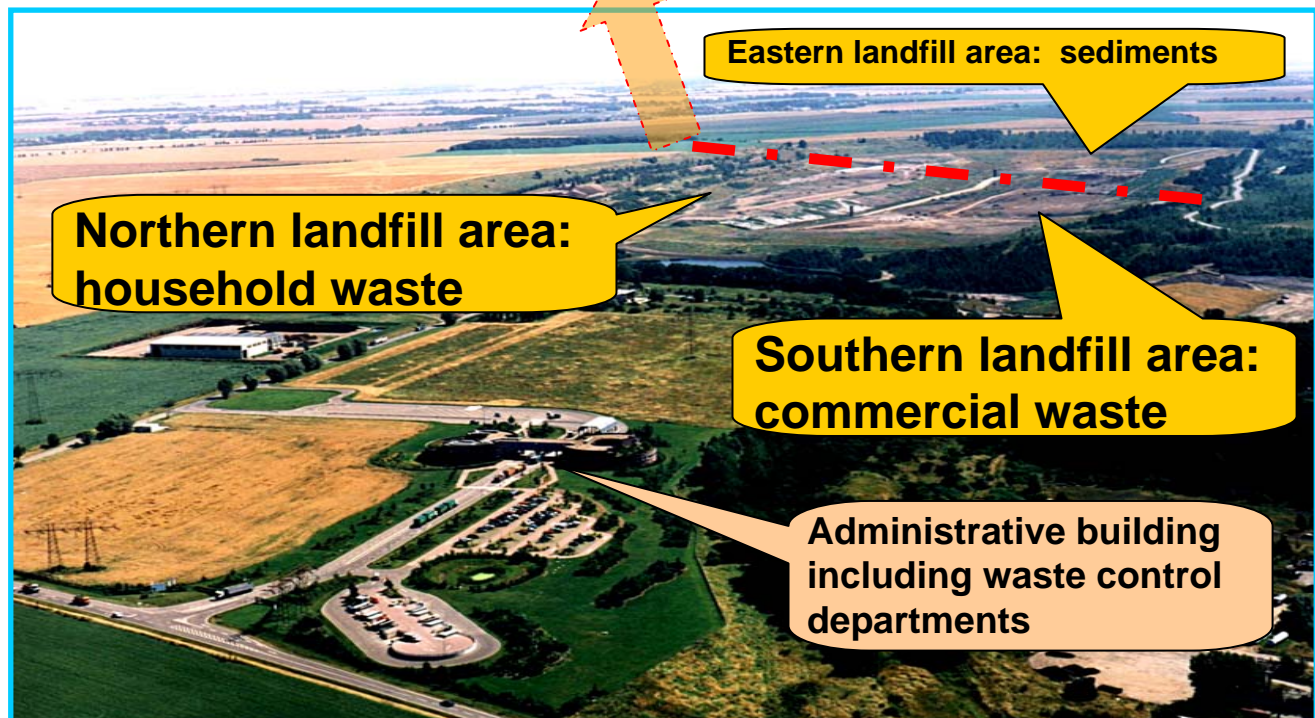
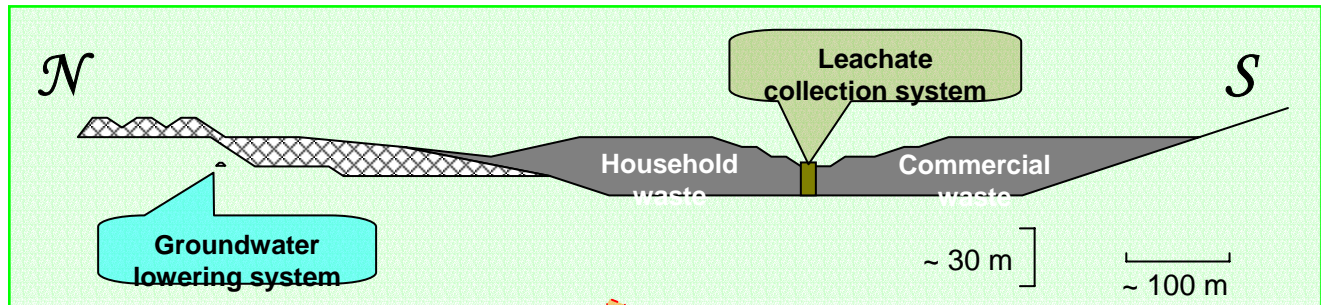
# Abfallwirtschaft GmbH Halle-Lochau





# Abfallwirtschaft GmbH Halle-Lochau

**Overview  
of the  
„Halle-  
Lochau“  
landfill  
2003**





# **Abfallwirtschaft GmbH Halle-Lochau**

## **Closure and Aftercare Regime for Landfills below the Water Table**

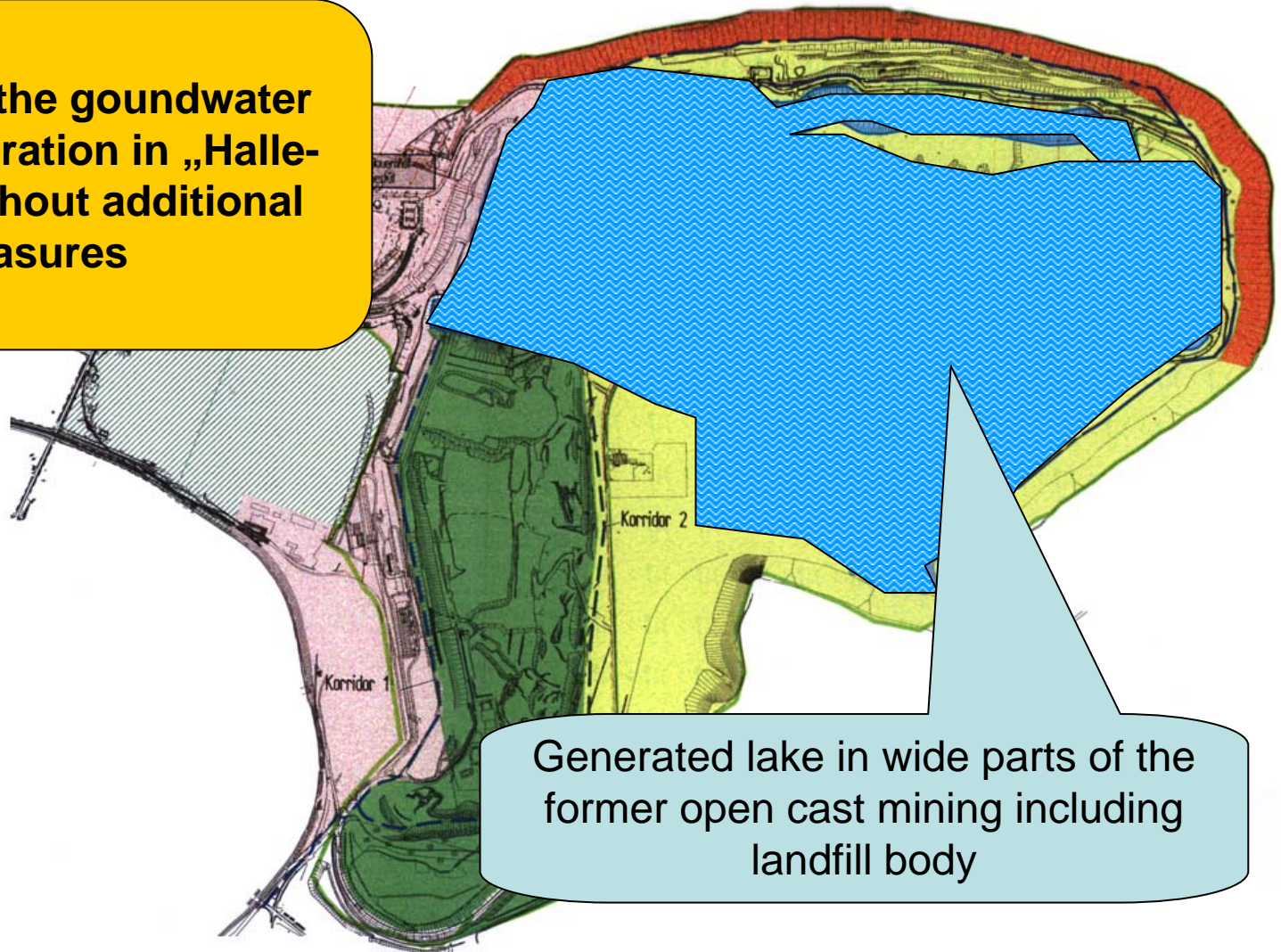
### **Part 2:**

### **Problems of landfills below the water table**



# Abfallwirtschaft GmbH Halle-Lochau

**Stopping of the groundwater lowering operation in „Halle-Lochau“ without additional measures**



Generated lake in wide parts of the former open cast mining including landfill body



# ***Abfallwirtschaft GmbH Halle-Lochau***

## **Closure and Aftercare Regime for Landfills below the Water Table**

### ***Part 3:***

# ***Research and development project***



# **Abfallwirtschaft GmbH Halle-Lochau**

**Investigations for the sustainable closure of landfills which were installed in areas of the former open coal mining carried out at the example “Halle-Lochau” landfill**

## **Aims of the research project:**

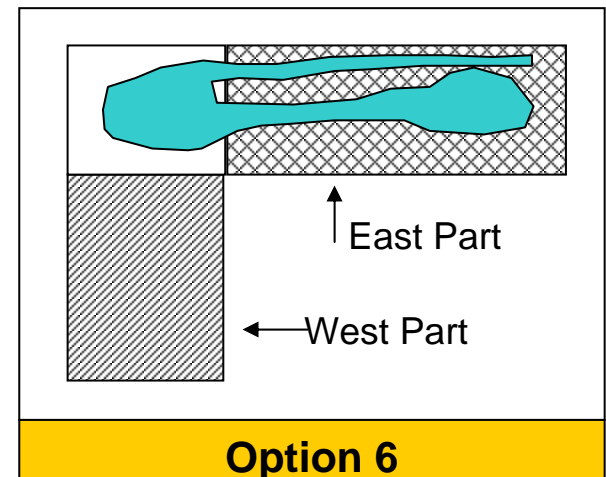
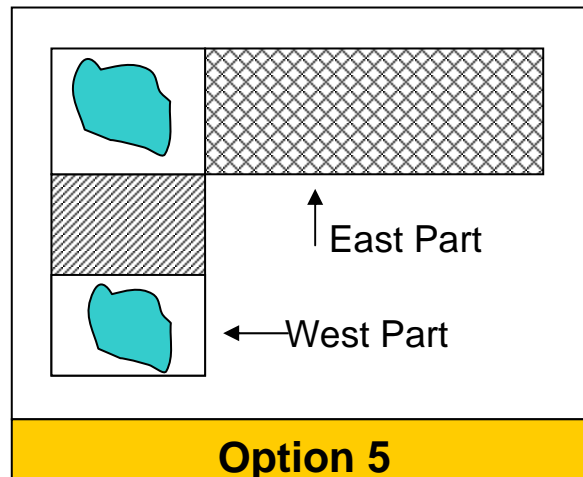
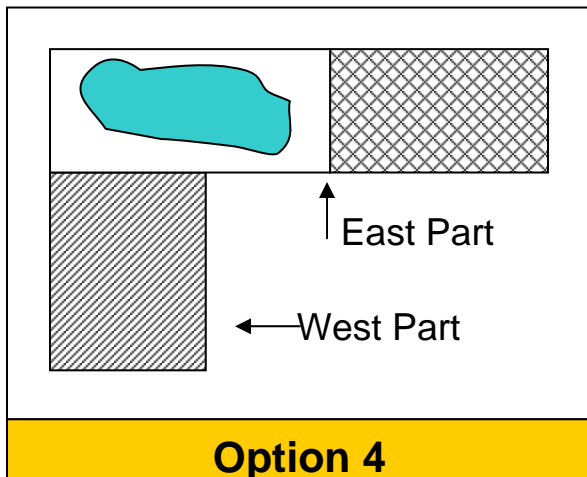
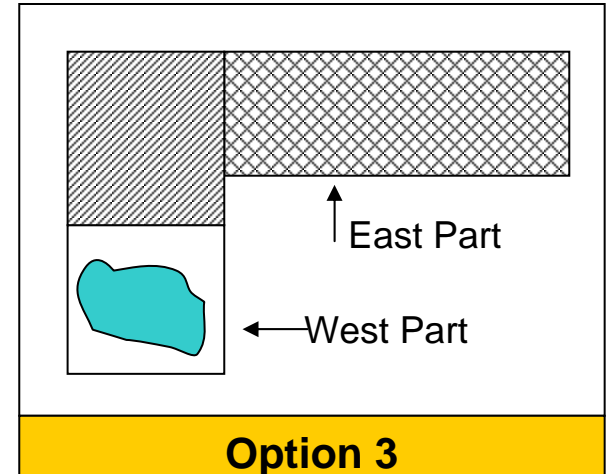
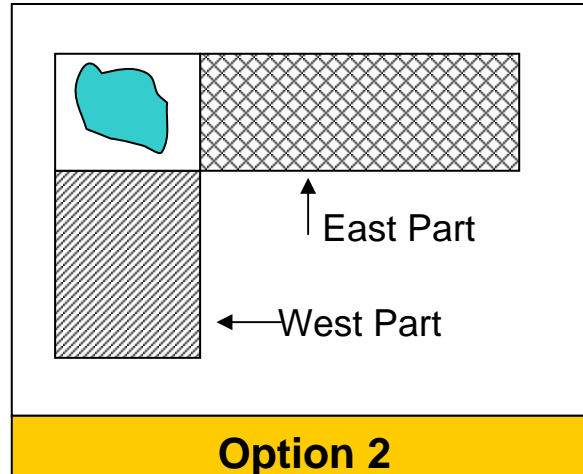
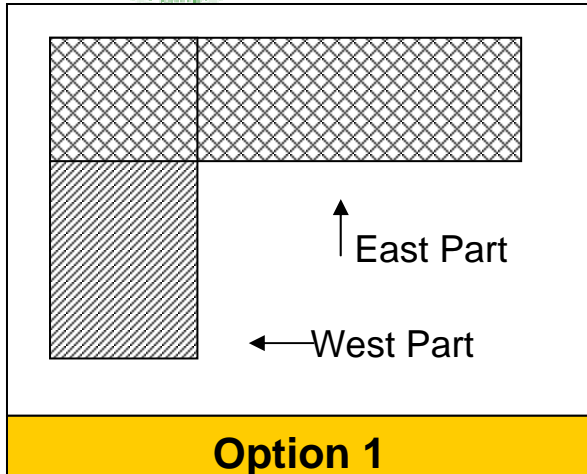
***Development of measures for closure, aftercare, recultivation and reuse of landfills below the water table***


- least cost solution
- technically feasible solution
- environmentally friendly solution
- sustainable solution






# Abfallwirtschaft GmbH Halle-Lochau



 Fulfilling of the East Part

 Fulfilling of the West Part

 Lake



# Abfallwirtschaft GmbH Halle-Lochau

